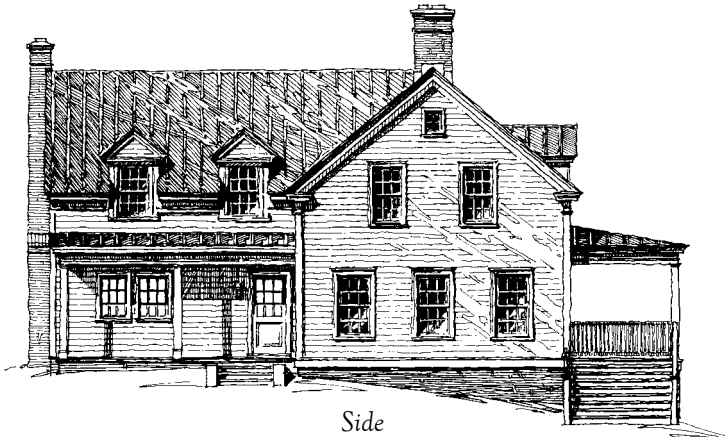


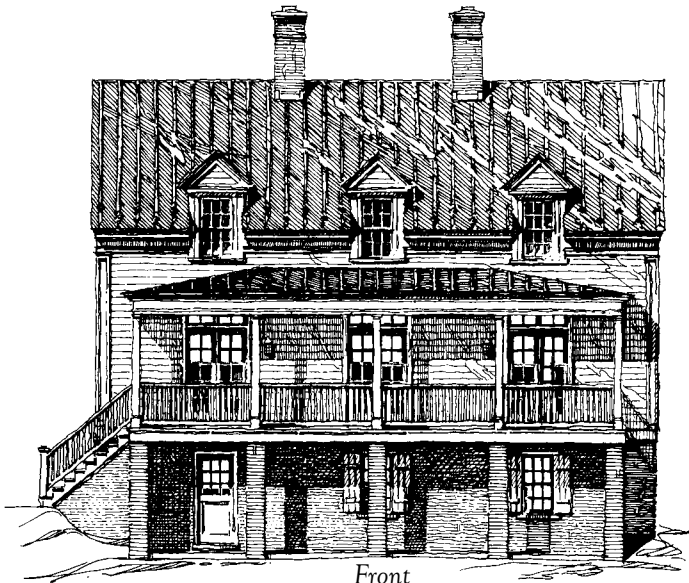


Simple Farmhouse Portfolio

HOMES BY RUSSELL VERSACI



Side



Front

The Carrier



THE CURRIER
3,236 SF

A Southern farmhouse built in the rolling foothills of the Blue Ridge.

Traditional architectural details

- Story-and-a-half façade with three pediment roof dormers
- Wide front entry porch on handmade brick foundations
- Three French doors with transoms opening onto front porch
- Classical cornice with frieze band and pilaster corners
- Columned side entry porch
- Walk-out ground floor living area

Principal features of the floor plans

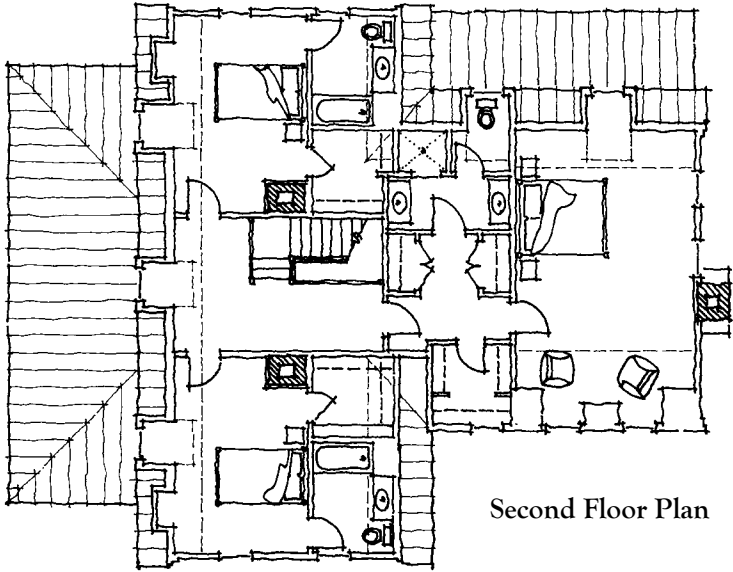
- Double parlor living room with fireplace
- Dining room with corner fireplace
- Open kitchen and hearth room with beamed ceiling
- Walk-in pantry and laundry with mudroom
- Spacious master bedroom suite with dressing and bath

SUMMARY

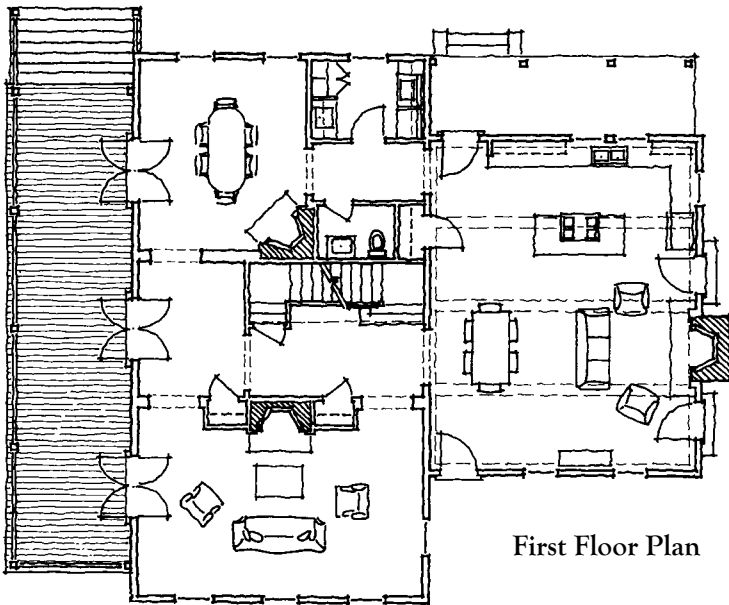
Bedrooms: 3
 Bathrooms: 3 1/2
 Floors: 2 + bsmnt
 Foundation: Brick

DIMENSIONS

Width: 45' 2"
 Depth: 46' 0"
 Ceiling Height: 8' 6"



Second Floor Plan



First Floor Plan

LIVING AREA

First Floor	1,609 sf
Second Floor	1,425 sf
Total Finished Area	3,034 sf
Covered Porches	495 sf
Basement (unfinished)	1,529 sf



Simple Farmhouse Portfolio
HOMES BY RUSSELL VERSACI

RUSSELL VERSACI ARCHITECTURE

Post Office Box 186
Seven North Liberty Street
Middleburg, Virginia 20118

www.russellversaci.com

540.687.8777