

# Pennywise

Factory-built homes from Russell Versaci

The Cooper's roots lie in the Quaker Plan houses built in the Pennsylvania Colony by English, Germans, Swiss, and Scotch-Irish settlers. The style was built in both town and country and transported to the south and to the west by later generations.

## The Cooper



rear



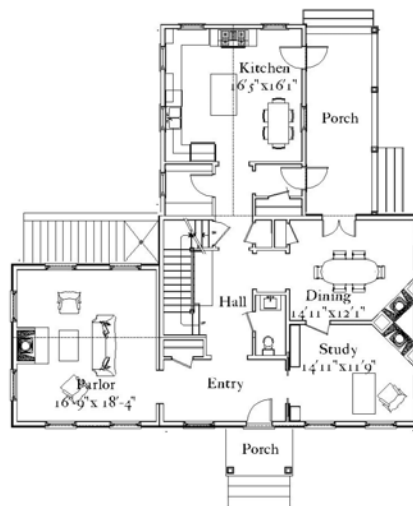
front

### Summary

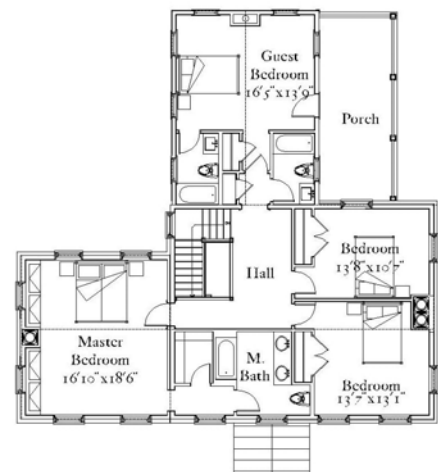
4 bedrooms, 3 1/2 baths  
Finished area: 2902 sf

First floor: 1451 sf  
Second floor: 1451 sf

Covered porches: 439 sf  
Unfin. basement: 1430 sf



first floor



second floor