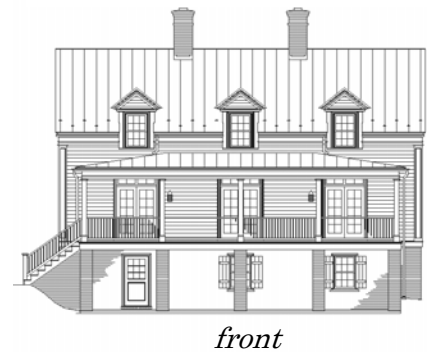
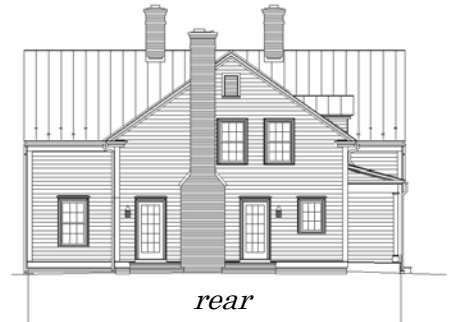


Pennywise

Factory-built homes from Russell Versaci

The Currier is a classic 19th-century Southern farmhouse with Greek Revival details. This home style was built throughout the Piedmont region, the fertile farmland stretching between the Appalachian Mountains and the Atlantic Ocean in Virginia, the Carolinas, and Georgia.

The Currier

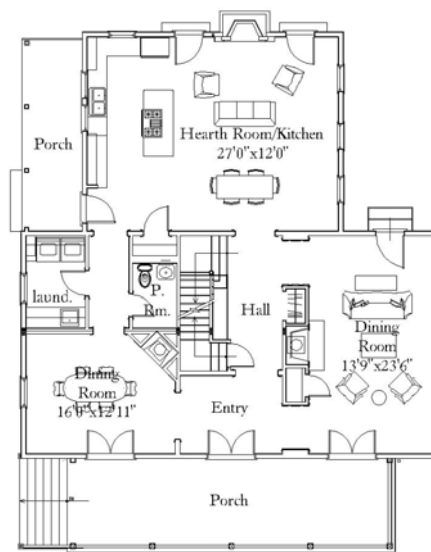


Summary

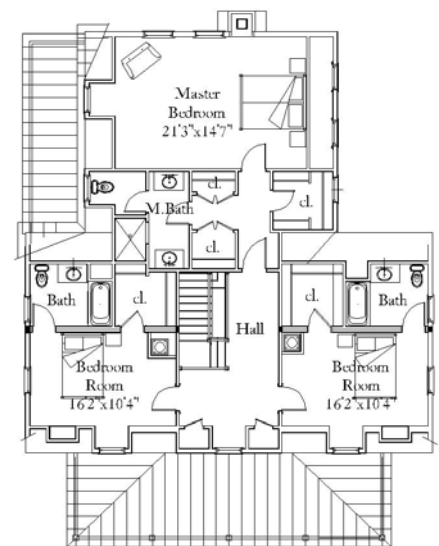
3 bedrooms, 3 1/2 baths
 Finished area: 3035 sf

First floor: 1609 sf
 Second floor: 1425 sf

Covered porches: 495 sf
 Unfin. basement: 1529 sf



first floor



second floor