

Pennywise

Factory-built homes from Russell Versaci

In the late 1800s the railroad ended America's reliance on local materials for building. Trains carried lumber from coast to coast, and clapboard-sided farmhouses were built in rural areas throughout America. The Joiner is a gable-and-wing example of the classic farmhouse style.

The Joiner



rear



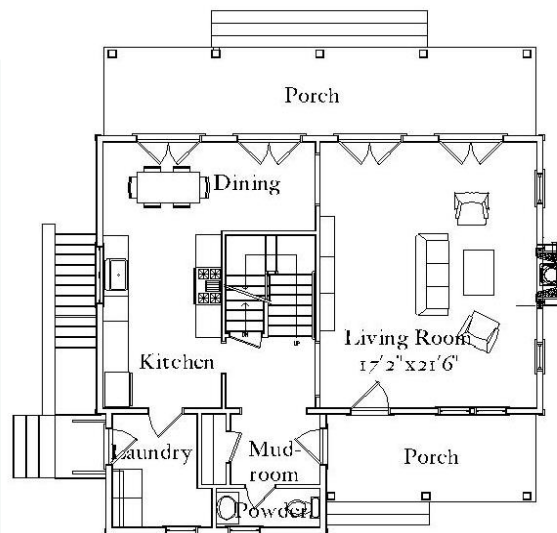
front

Summary

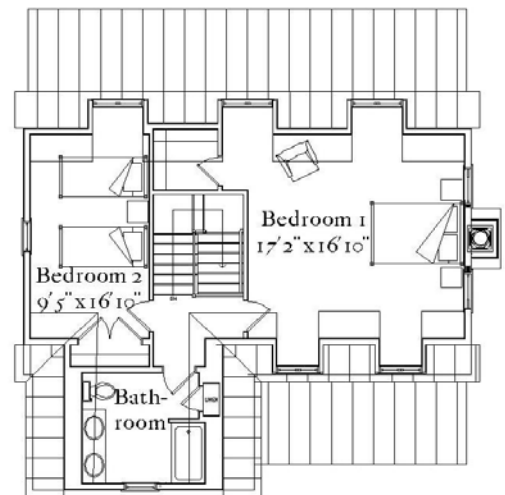
2 bedrooms, 1 1/2 baths
Finished area: 1599 sf

First floor: 879 sf
Second floor: 720 sf

Covered porches: 393 sf
Unfin. basement: 836 sf



first floor



second floor