

Pennywise

Factory-built homes from Russell Versaci

A passion for classicism defined the early years of the New Republic and spread to home design. The Scribner is an 18th-century style house inspired by Andrea Palladio, with a temple front façade and balanced wings. It includes a ground-floor master bedroom

The Scribner



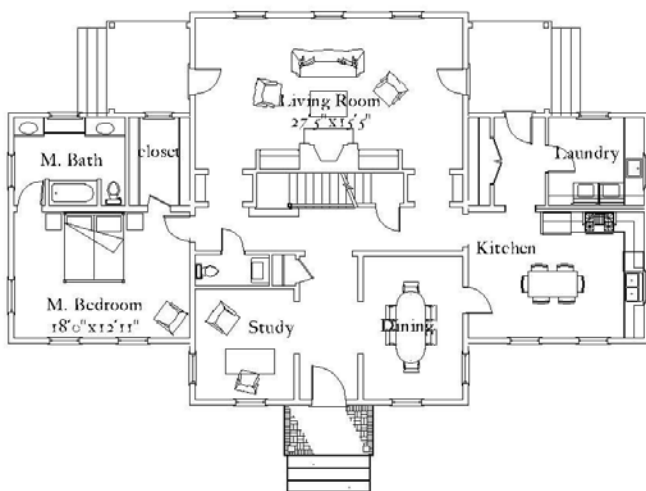
rear



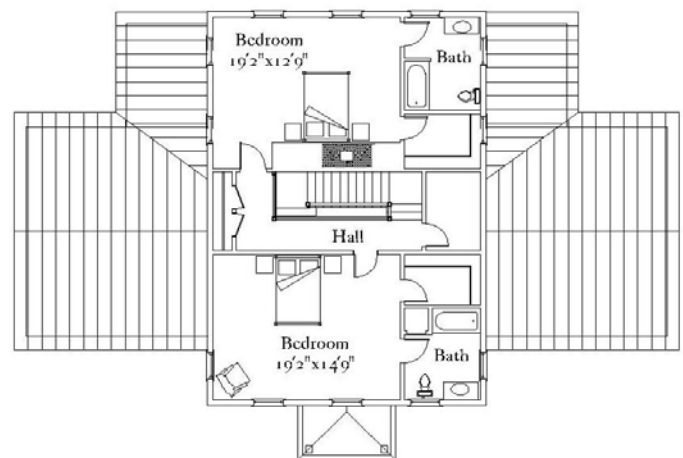
front

Summary

3 bedrooms, 3 1/2 baths,	First floor: 1818 sf	Covered porches: 233 sf
Finished area: 2884 sf	Second floor: 1066 sf	Unfin. basement: 1749 sf



first floor



second floor